

Comparing Dinosaurs to modern birds

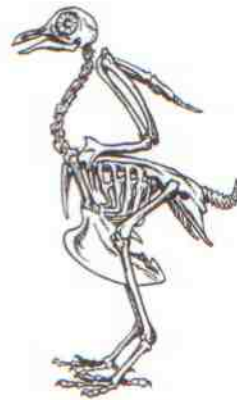
One of the ways scientists develop theories about dinosaurs is by comparing them to similar animals today, especially birds.

Research indicates the theory that dinosaurs have evolved into birds.



Archeopteryx

Dinosaurs have similar skeletal structures to those of birds. The hipbones, of some dinosaurs are similar to those of modern day birds. Dinosaurs may have had feathers, raised their young, and nested in similar fashion to birds.



Pigeon

The missing link between birds and dinosaurs is Archeopteryx. Archeopteryx is oldest known bird-like creature to scientists, but it is still very different from modern birds. While archeopteryx has feathers its jaw was filled with teeth and three fingers tipped with claws.

Scientists argue over whether Archeopteryx could fly or climb in trees and glide. Apparently, Archeopteryx's brain was big enough to allow flight, but its breast bone was too large and it was missing a reversed toe found in most flying birds.